

GENERAL NOTES:

SPRING DESIGNATED AREAS TO BE SPACED 200 FT. MAX. ALL 1" FIELD ARMED REINFORCING SHALL HAVE HANGERS ALL 1" FIELD ARMED REINFORCING SHALL HAVE HANGERS 2" AND SMALLER TO BE CIVIC PIPE

SPRINKLER HEAD NOTES:

SPRINKLERS IN LIGHT HAZARD AREAS TO BE SPACED 200 SQ FT. MAX. SPRINKLERS IN DRAIN HAZARD AREAS TO BE SPACED 100 SQ FT. MAX.

INSTALLATION NOTE:

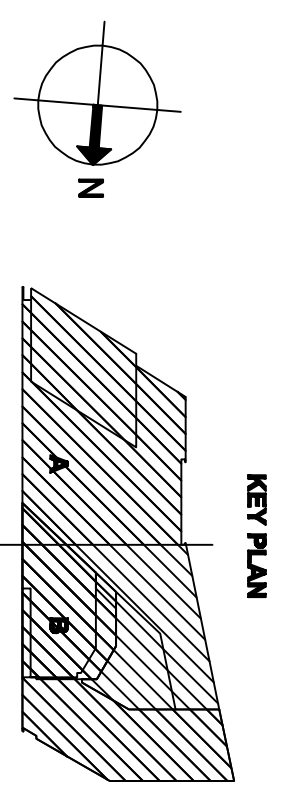
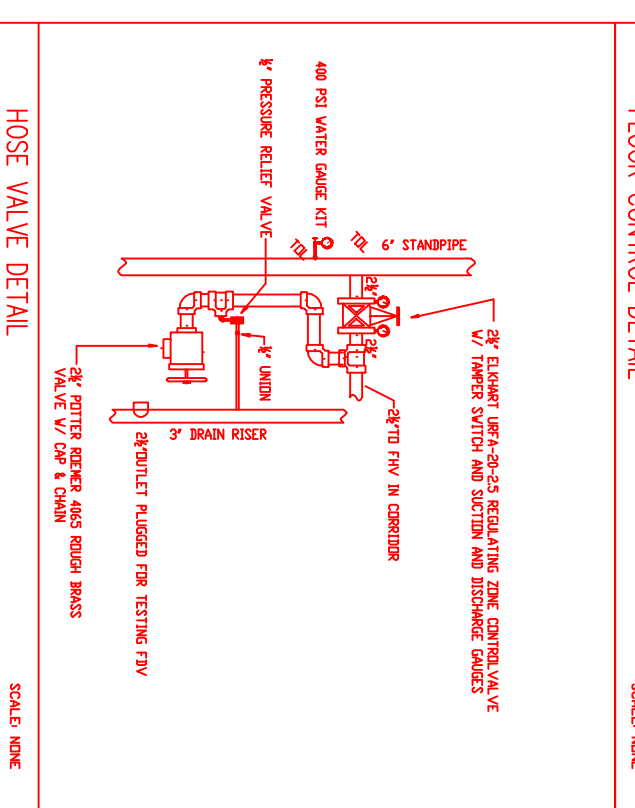
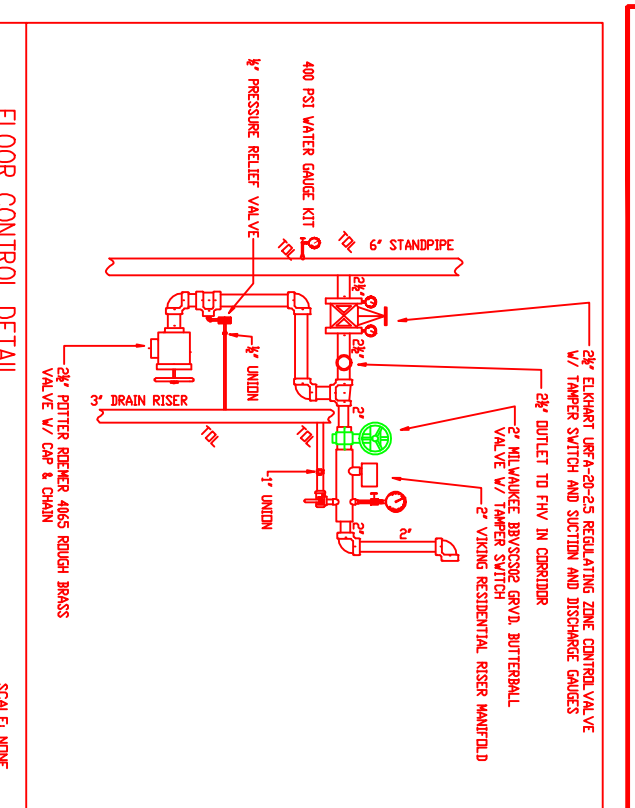
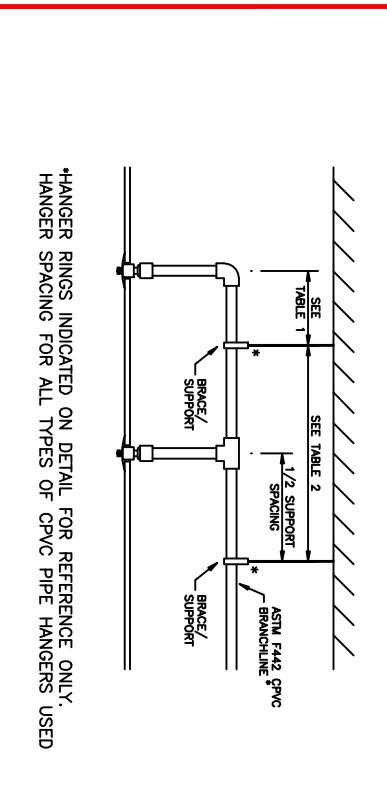
STEEL PIPE TO UNRESISTIVE OR CONCRETE BESS SEE HANGER DETAIL #24

HANGER DETAILS FOR CONCRETE BESS AND UNRESISTIVE FROM DETAIL #24

HEAT RATED	QBS	INTRA
SIZE OF OPEN OR RECEIVED FINISH	26	22
FRONT OF RECEIVED FINISH	49	36
COL. OR VOID BARRING STOVE	42	22
KITCHEN RANGE	28	9
WALL OVEN	28	9
HOT AIR FLUES	28	9
UNINSULATED HOT WATER PIPES	28	9
UNINSULATED HOT WATER PIPES	28	9
FRONT OF VENTILATED HOT AIR	26	28
HOT WATER HEATER OR THERMO	6	2
LIQUID FURNACE	6	2
0.4" - 1.0" V	6	2
2.0" V - 4.99" V	12	6
SIZE OF CEILING OR WALL-MOUNTED HOT	26	28

TABLE 1
MINIMUM PIPE WALL THICKNESS
FOR STEEL PIPE UNDER VARIOUS
LOADS AND PRESSURES

PIPE SIZE	MINIMUM WALL THICKNESS (INCHES)
1/2"	0.083
3/4"	0.094
1"	0.106
1 1/4"	0.125
1 1/2"	0.141
2"	0.188
2 1/2"	0.234
3"	0.281
3 1/2"	0.328
4"	0.375
4 1/2"	0.422
5"	0.469
5 1/2"	0.516
6"	0.563
6 1/2"	0.610
7"	0.657
7 1/2"	0.704
8"	0.751
8 1/2"	0.798
9"	0.845
9 1/2"	0.892
10"	0.939
10 1/2"	0.986
11"	1.033
11 1/2"	1.080
12"	1.127
12 1/2"	1.174
13"	1.221
13 1/2"	1.268
14"	1.315
14 1/2"	1.362
15"	1.409
15 1/2"	1.456
16"	1.503
16 1/2"	1.550
17"	1.597
17 1/2"	1.644
18"	1.691
18 1/2"	1.738
19"	1.785
19 1/2"	1.832
20"	1.879
20 1/2"	1.926
21"	1.973
21 1/2"	2.020
22"	2.067
22 1/2"	2.114
23"	2.161
23 1/2"	2.208
24"	2.255
24 1/2"	2.302
25"	2.349
25 1/2"	2.396
26"	2.443
26 1/2"	2.490
27"	2.537
27 1/2"	2.584
28"	2.631
28 1/2"	2.678
29"	2.725
29 1/2"	2.772
30"	2.819
30 1/2"	2.866
31"	2.913
31 1/2"	2.960
32"	3.007
32 1/2"	3.054
33"	3.101
33 1/2"	3.148
34"	3.195
34 1/2"	3.242
35"	3.289
35 1/2"	3.336
36"	3.383
36 1/2"	3.430
37"	3.477
37 1/2"	3.524
38"	3.571
38 1/2"	3.618
39"	3.665
39 1/2"	3.712
40"	3.759
40 1/2"	3.806
41"	3.853
41 1/2"	3.900
42"	3.947
42 1/2"	3.994
43"	4.041
43 1/2"	4.088
44"	4.135
44 1/2"	4.182
45"	4.229
45 1/2"	4.276
46"	4.323
46 1/2"	4.370
47"	4.417
47 1/2"	4.464
48"	4.511
48 1/2"	4.558
49"	4.605
49 1/2"	4.652
50"	4.699
50 1/2"	4.746
51"	4.793
51 1/2"	4.840
52"	4.887
52 1/2"	4.934
53"	4.981
53 1/2"	5.028
54"	5.075
54 1/2"	5.122
55"	5.169
55 1/2"	5.216
56"	5.263
56 1/2"	5.310
57"	5.357
57 1/2"	5.404
58"	5.451
58 1/2"	5.498
59"	5.545
59 1/2"	5.592
60"	5.639
60 1/2"	5.686
61"	5.733
61 1/2"	5.780
62"	5.827
62 1/2"	5.874
63"	5.921
63 1/2"	5.968
64"	6.015
64 1/2"	6.062
65"	6.109
65 1/2"	6.156
66"	6.203
66 1/2"	6.250
67"	6.297
67 1/2"	6.344
68"	6.391
68 1/2"	6.438
69"	6.485
69 1/2"	6.532
70"	6.579
70 1/2"	6.626
71"	6.673
71 1/2"	6.720
72"	6.767
72 1/2"	6.814
73"	6.861
73 1/2"	6.908
74"	6.955
74 1/2"	7.002
75"	7.049
75 1/2"	7.096
76"	7.143
76 1/2"	7.190
77"	7.237
77 1/2"	7.284
78"	7.331
78 1/2"	7.378
79"	7.425
79 1/2"	7.472
80"	7.519
80 1/2"	7.566
81"	7.613
81 1/2"	7.660
82"	7.707
82 1/2"	7.754
83"	7.801
83 1/2"	7.848
84"	7.895
84 1/2"	7.942
85"	7.989
85 1/2"	8.036
86"	8.083
86 1/2"	8.130
87"	8.177
87 1/2"	8.224
88"	8.271
88 1/2"	8.318
89"	8.365
89 1/2"	8.412
90"	8.459
90 1/2"	8.506
91"	8.553
91 1/2"	8.600
92"	8.647
92 1/2"	8.694
93"	8.741
93 1/2"	8.788
94"	8.835
94 1/2"	8.882
95"	8.929
95 1/2"	8.976
96"	9.023
96 1/2"	9.070
97"	9.117
97 1/2"	9.164
98"	9.211
98 1/2"	9.258
99"	9.305
99 1/2"	9.352
100"	9.399

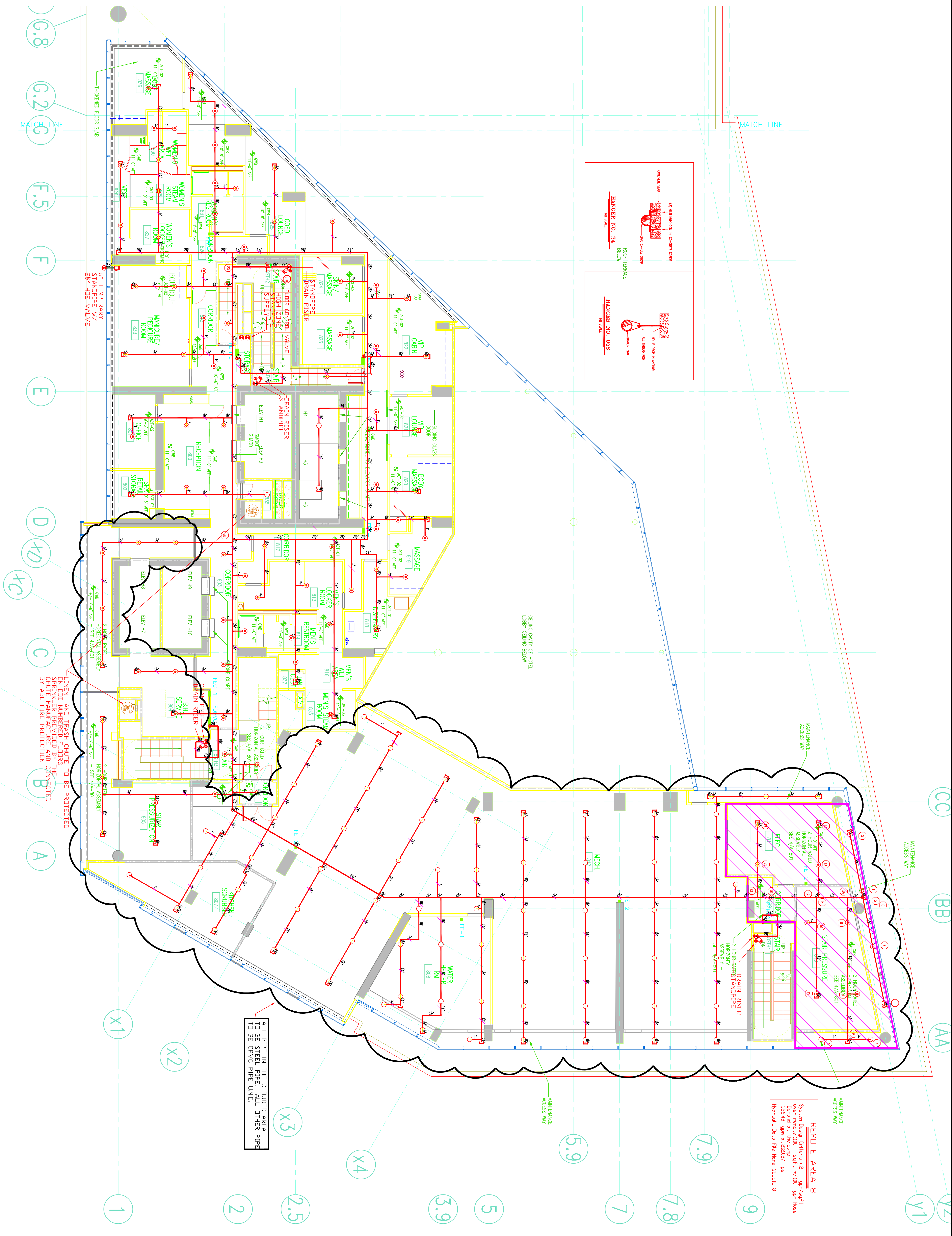


LEVEL 8 FIRE PROTECTION FLOOR PLAN
SPA AND MEHP

Rd4, A-C098, A-BP08, 1-PP08,
S.G.P., FPI08N

LEVEL 8-FIRE PROTECTION PLAN-TOWER
PIPING PLAN

1/8" = 1'-0"



LEGEND RATED WALLS

SMK. MAKE	MODEL	SM. NO.	SIZE	FINISH	TEMP.	TYPE	ESOUCTION	QUAN.
WING	MICROMATIC	1/2	CHROME	155	PENDENT	5.6	RECESSED CHROME	91
WING	MICROMATIC	1/2	BRASS	155	UPRIGHT	5.6	N/A	74
WING	MICROMATIC (CORRO-PROOF)	1/2	POLY	155	PENDENT	5.6	RECESSED CHROME	2

TYPES OF SPRINKLERS

SM. NO.	FINISH	TEMP.	TYPE	ESOUCTION	QUAN.
1/2	CHROME	155	PENDENT	5.6	RECESSED CHROME
1/2	BRASS	155	UPRIGHT	5.6	N/A
1/2	POLY	155	PENDENT	5.6	RECESSED CHROME

REVISION DESCRIPTION

#	DATE	REVISION DESCRIPTION	BY

This drawing and the information hereon is the property of ABL Fire Protection, LLC and may not be reproduced, altered or used in any form without consent from ABL Fire Protection, LLC

Arthur K. Lamson, Jr., N.I.C.E.T., Level III #2046275
I certify that to the best of my knowledge this plan, prepared under my supervision, is in accordance with applicable NFPA standards, current building codes.

CONTRACTOR:
File Protection, LLC

300 Hoke Street
Raleigh, NC 27601-2637
Phone: (919) 835-2225
Fax: (919) 835-2210

PROJECT:
Sofal Center
4501 Creedmoor Road
Raleigh, North Carolina

DESIGNED BY: **Jerry Boggs**
SPRINK. ON: 08/11
SCALE: 1/8" = 1'-0"
APPROVALS: 2698
SHEET # PP39